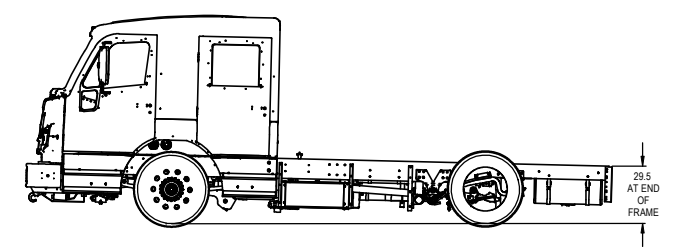
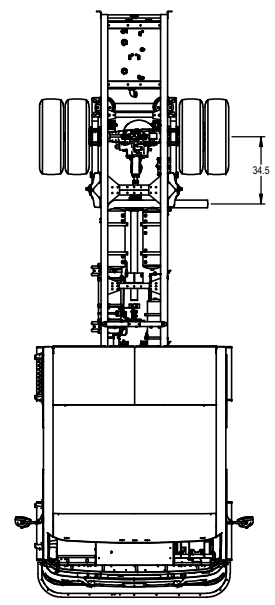
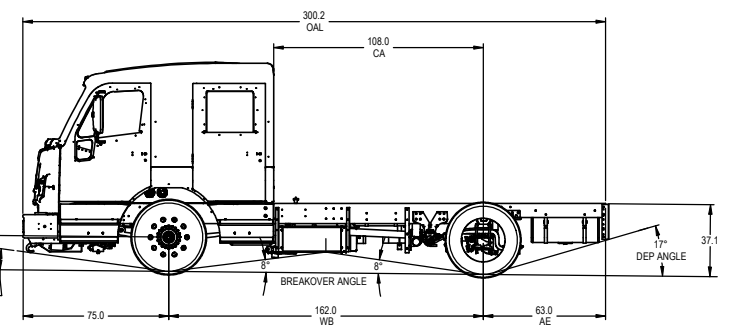
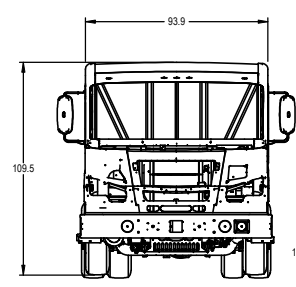
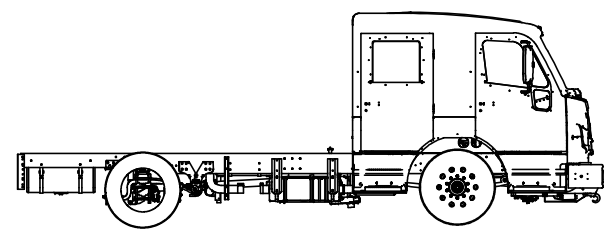


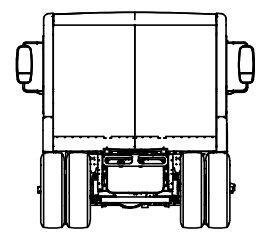
| REVISIONS |                 |      |      |    |          |
|-----------|-----------------|------|------|----|----------|
| REV       | DESCRIPTION     | AUTH | DATE | DR | CHK/APPD |
| A         | INITIAL RELEASE |      |      |    |          |



REAR SUSPENSION DUMPED



SUSPENSION AT FULL LOAD RIDE HEIGHT



PER SAE J689  
 APPROACH ANGLE  
 BREAK OVER ANGLE  
 DEPARTURE ANGLE

|   |   |         |                      |                         |
|---|---|---------|----------------------|-------------------------|
| RELEASE AUTHORITY:<br><b>DO NOT SCALE DRAWING</b><br>DIMENSIONS IN 1/8" ARE UNLESS NOTED<br>PART NUMBER IS REVISED AFTER<br>CHANGES ARE MADE<br>DIMENSIONS IN THIS DRAWING OF<br>SPARTAN CHASSIS, INC. PROPERTY OF<br>HENDRICKSON ARE NOT TO BE USED AS A<br>REFERENCE FOR THE REPRODUCTION OF<br>SPARTAN CHASSIS, INC. PRODUCTS. | L-2123-001  |         | PART NUMBER OPPOSITE |                         |
|   | PART NUMBER   |         | PART NUMBER OPPOSITE |                         |
|   | Spartan Chassis, Inc.<br>1800 Reynolds Rd., Chatham, VT 05813 |         |                      |                         |
|   | FURIGON AMBULANCE W/SC &<br>HENDRICKSON AIR REAR, 162" WB     |         |                      |                         |
| JWBESTZ   | LD/OMA  | 10/2008 | DESIGNED BY          | APPROVED BY             |
| DIMENSIONS ARE IN INCHES<br>UNLESS NOTED<br>SCALE: A 1:1<br>B 1:2<br>C 1:4<br>D 1:8<br>E 1:16<br>F 1:32   |   |         |                      |                         |
| DRAWING NUMBER<br><b>L-2123</b>   |   |         |                      | PART NUMBER<br><b>A</b> |